



BlackBridge
a Planet Labs Company

GROßFLÄCHIGE UND HOCHFREQUENTE BEOBACHTUNG VON AGRARFLÄCHEN DURCH OPTISCHE SATELLITEN (RAPIDEYE, LANDSAT 8, SENTINEL-2)

- Karsten Frotscher | Produktmanager Landwirtschaft

A Couple Of Words About The Latest Headlines...



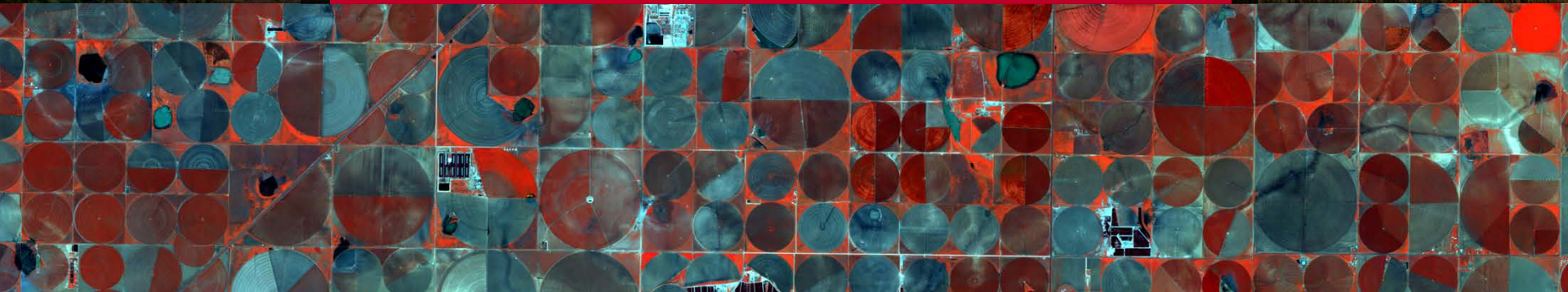
BlackBridge
a Planet Labs Company

BlackBridge is now part of the Planet Labs family





The Challenges



When You Need to Manage Fields You Want...



Information about your fields several times during the growing season

Enough in-field detail

Cost-effectiveness

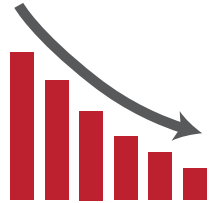
A reliable source of information available over large areas

So That at The End of The Day You Can...



BlackBridge
a Planet Labs Company

- Help your customers make better decisions for better field management



Optimize input costs



Increase yield



Farm sustainability

Getting a Regular Picture of Your Fields



BlackBridge
a Planet Labs Company



Aug 08, 2013

Enough In-field Detail to Monitor Variability



BlackBridge
a Planet Labs Company



But When You Need to Cover Large Areas...



BlackBridge
a Planet Labs Company





Can Satellite Imagery Take Care of All That?



BlackBridge
a Planet Labs Company

Broad coverage



In-season revisit



In-field detail



Cost-effectiveness





The Monitoring Solution

Monitoring Program Features



BlackBridge
a Planet Labs Company

BROAD COVERAGE



- + Major agricultural areas worldwide

IN-SEASON REVISIT



- + Daily acquisition within AOI
- + Typically one image per month

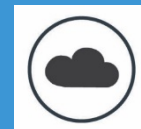
IN-FIELD DETAIL



- + 5 meter ortho
- + 5 spectral bands
- + High positional accuracy

QUICK & EASY DATA MANAGEMENT

- + API
- + GUI
- + Colocation



MULTI-YEAR ARCHIVE

- + 7 years of archived RapidEye imagery
- + Co-registered Landsat 8 imagery
- + Sentinel-2 imagery



Imagery Products



BlackBridge
a Planet Labs Company



RAPIDEYE ORTHO PRODUCT 3A

- + 5 m pixel size
- + 5 spectral bands
- + 25 x 25 km tile size
- + **GeoTiff Download**



LANDSAT-8 L1T CO-REGISTERED

- + 30 m MS Bands
- + 15 m Pan Bands
- + TIRS
- + In Program AOIs
- + Co-registered w/ RE
- + **GeoTiff Download**



SENTINEL-2

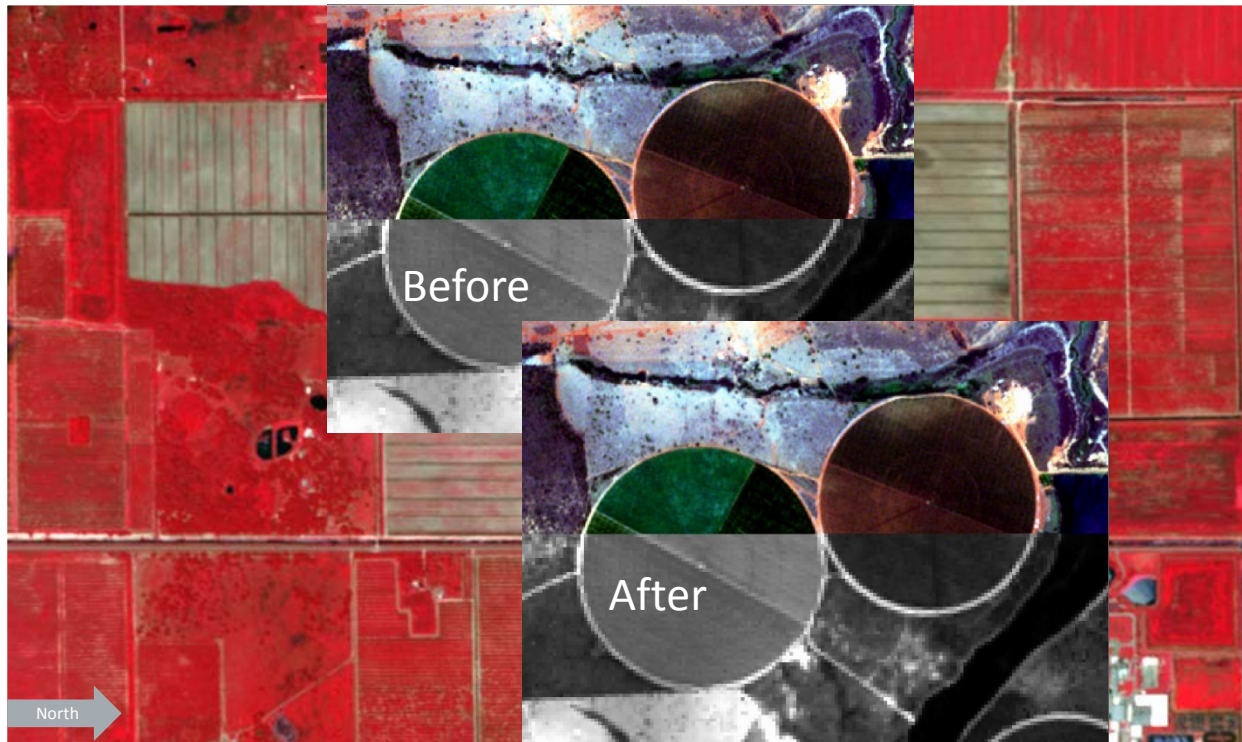
RapidEye & Landsat 8 (& Sentinel-2)



BlackBridge
a Planet Labs Company

Increased
Reliability

Improved
Inter-
Usability



RapidEye L3A
NIR, Red, Green
2013-08-12
5 meter
16 bit unsigned
BlackBridge

Landsat 8 L1T
NIR, Red, Green
2013-08-11
30 meter
16 bit unsigned
USGS

Image Acquisitions



**North America Agriculture
15-05-2015 to 15-09-2015**

Copyright © BlackBridge. All Rights Reserved.

Broad Coverage - North America Example

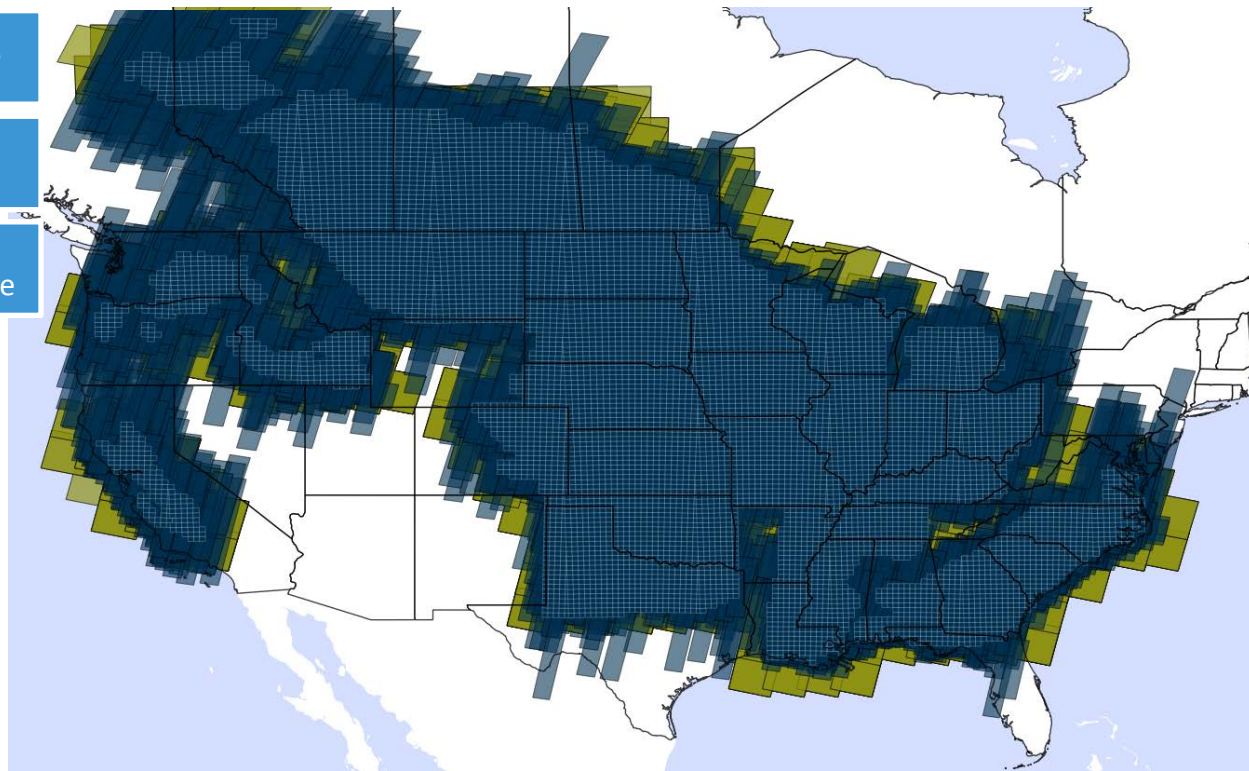


BlackBridge
a Planet Labs Company

Scalable

Reliable

Easily
Accessible



Daily coverage

Month 1 coverage

+ Month 2 coverage

+ Month 3 coverage

+ Month 4 coverage



RapidEye Image Takes



RapidEye Ortho Products

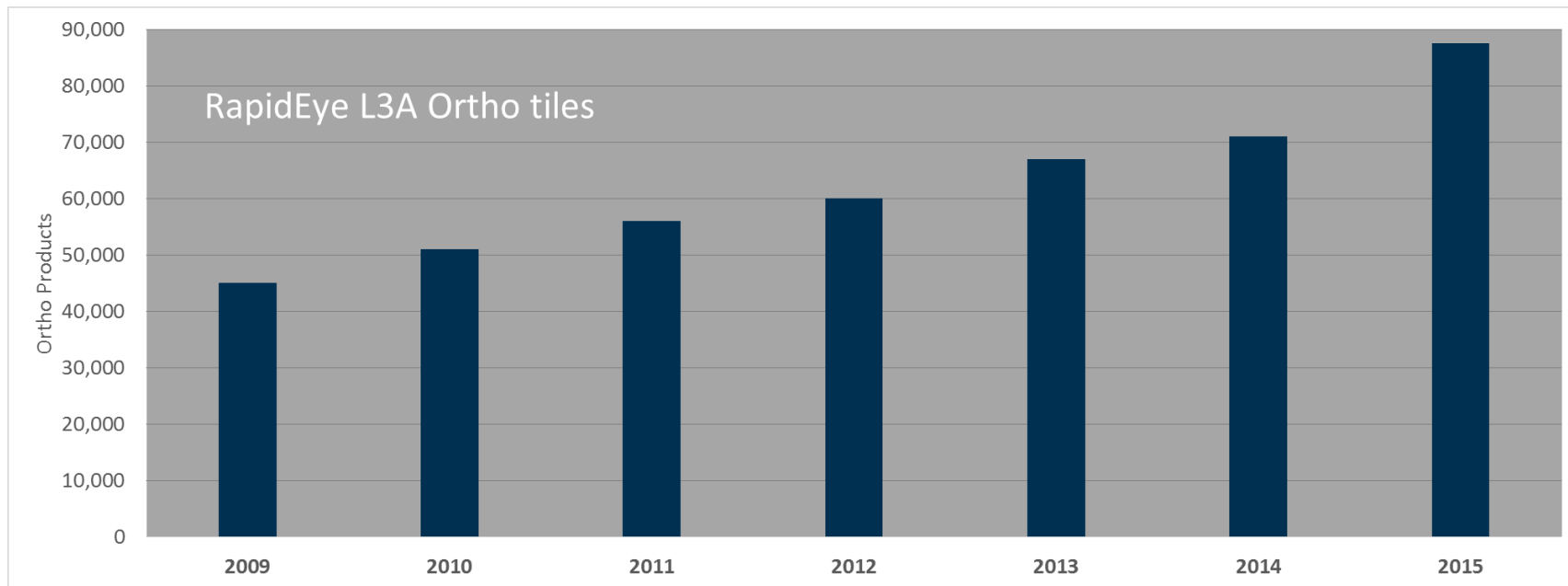


Landsat 8 Scenes

Multi-Year Archive - North America Example



BlackBridge
a Planet Labs Company

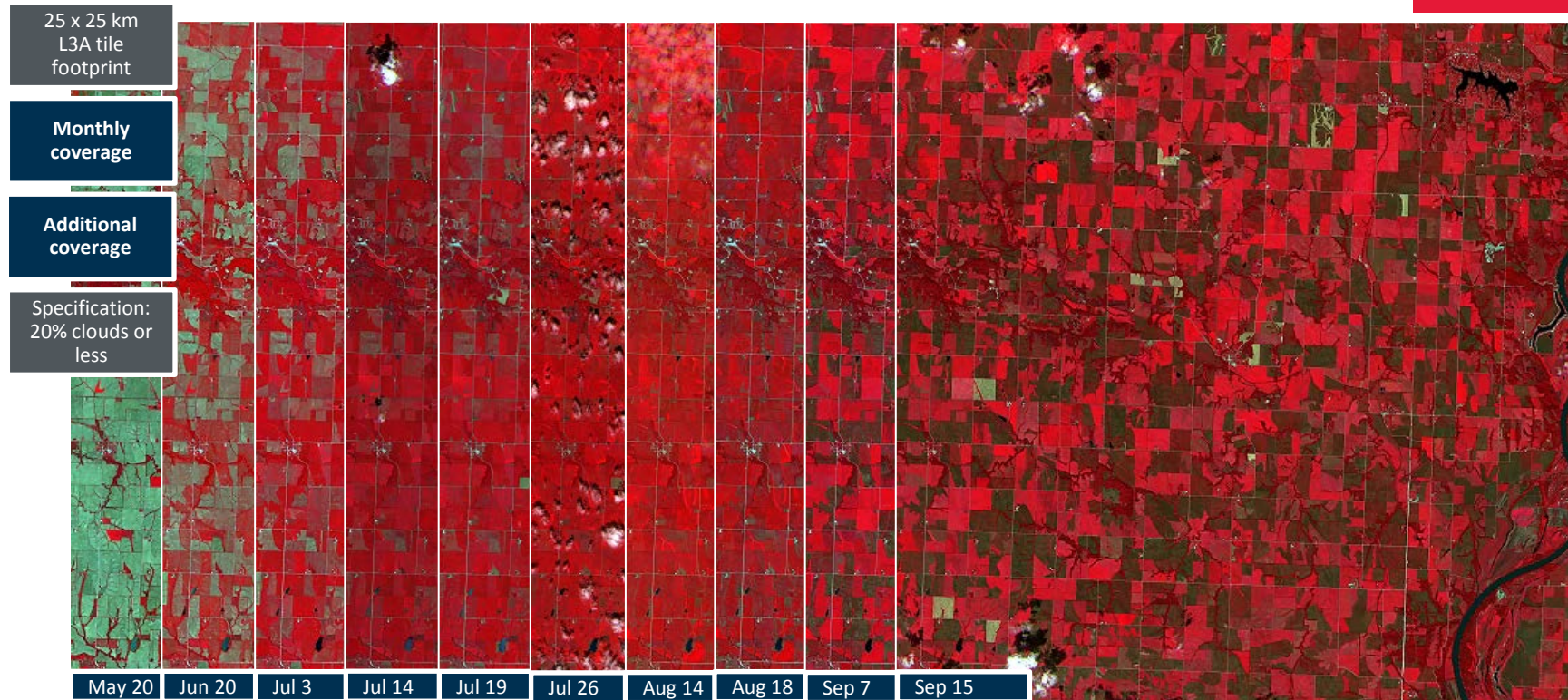


Archive Period: 15th of May to 15th of September for each year

In-Season Revisit



BlackBridge
a Planet Labs Company



In-Season Revisit



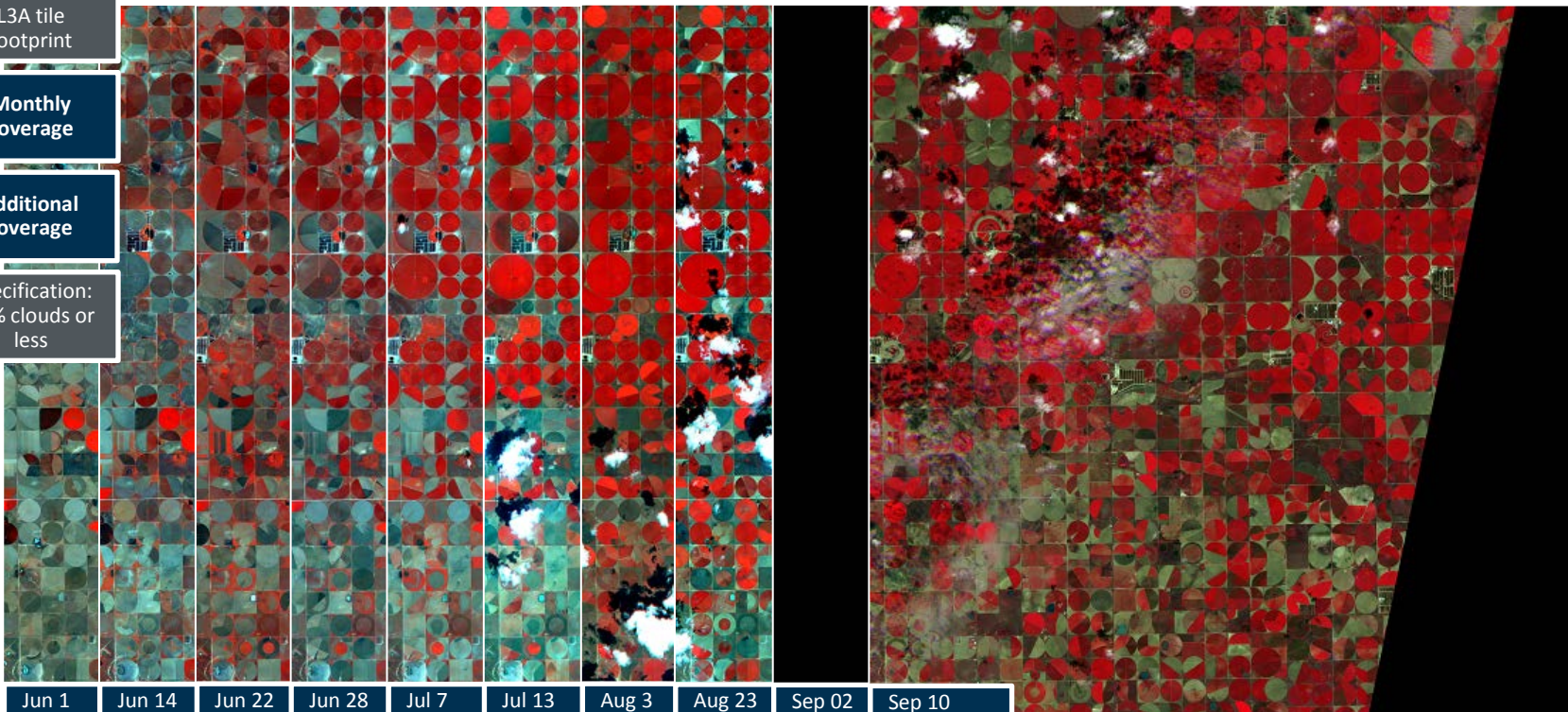
BlackBridge
a Planet Labs Company

25 x 25 km
L3A tile
footprint

Monthly
coverage

Additional
coverage

Specification:
20% clouds or
less



In-Field Detail - Color-Infrared (CIR)



BlackBridge
a Planet Labs Company

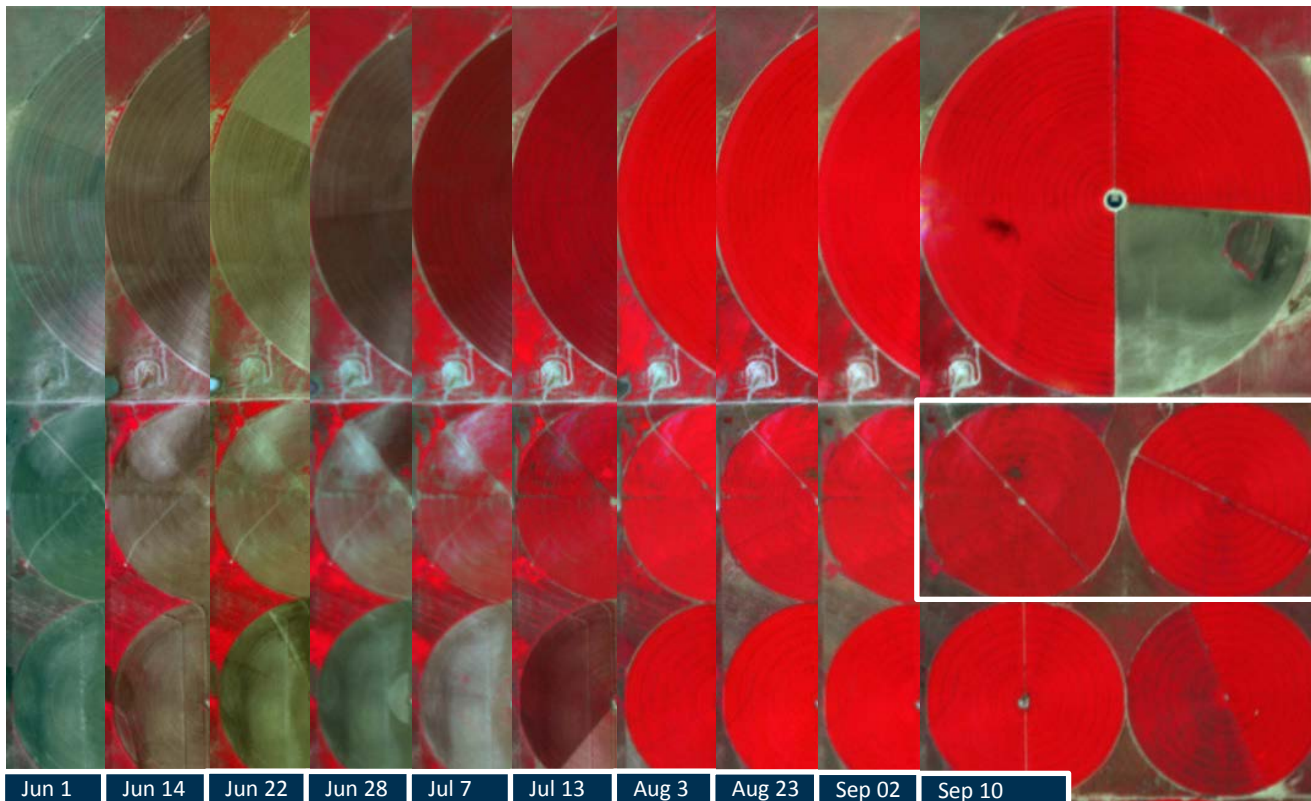
CIR Imagery

Scout for
Problems

Analyze
Growth Stage

Monitor Crop
Health

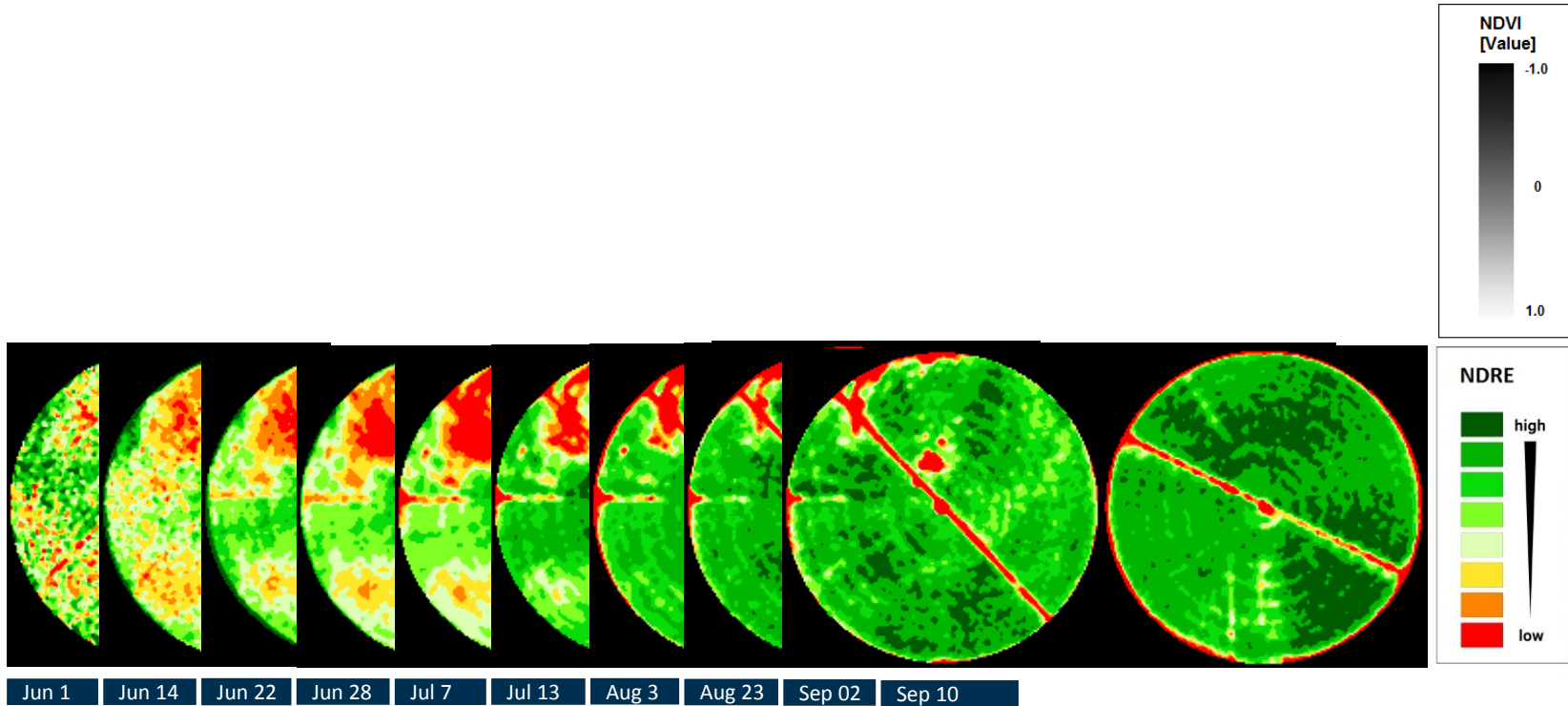
Write
Prescriptions



Use Case – Vegetation Index



BlackBridge
a Planet Labs Company



Use Case – Vegetation Index



BlackBridge
a Planet Labs Company

CIR Imagery

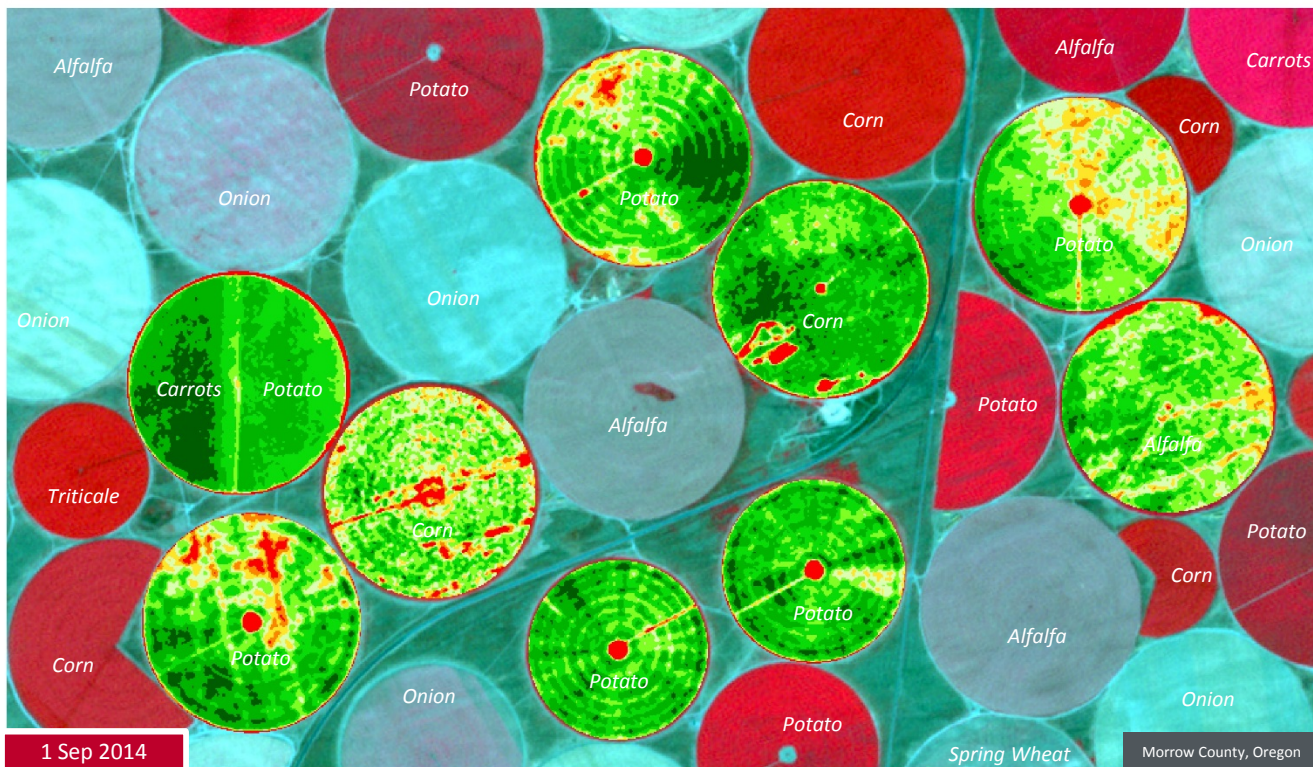
Vegetation
Index

Scout for
Problems

Analyze
Growth Stage

Monitor Crop
Health

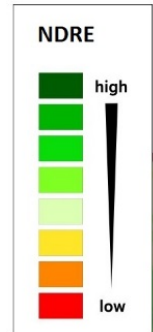
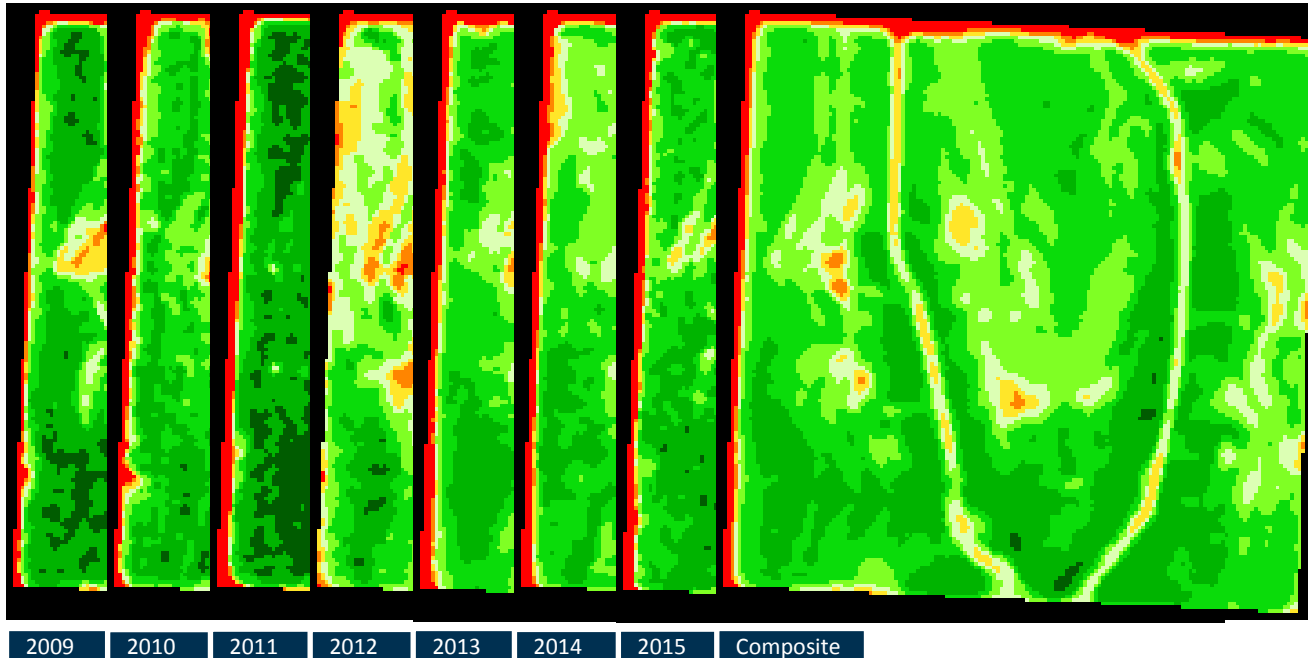
Write
Prescriptions



Use Case – Persistent Productivity Zones



BlackBridge
a Planet Labs Company



In-Field Status and Variability



BlackBridge
a Planet Labs Company

Imagery is used to delineate management zones and for decision support:

Variable rate fertilization application

Detection of water issues and irrigation needs

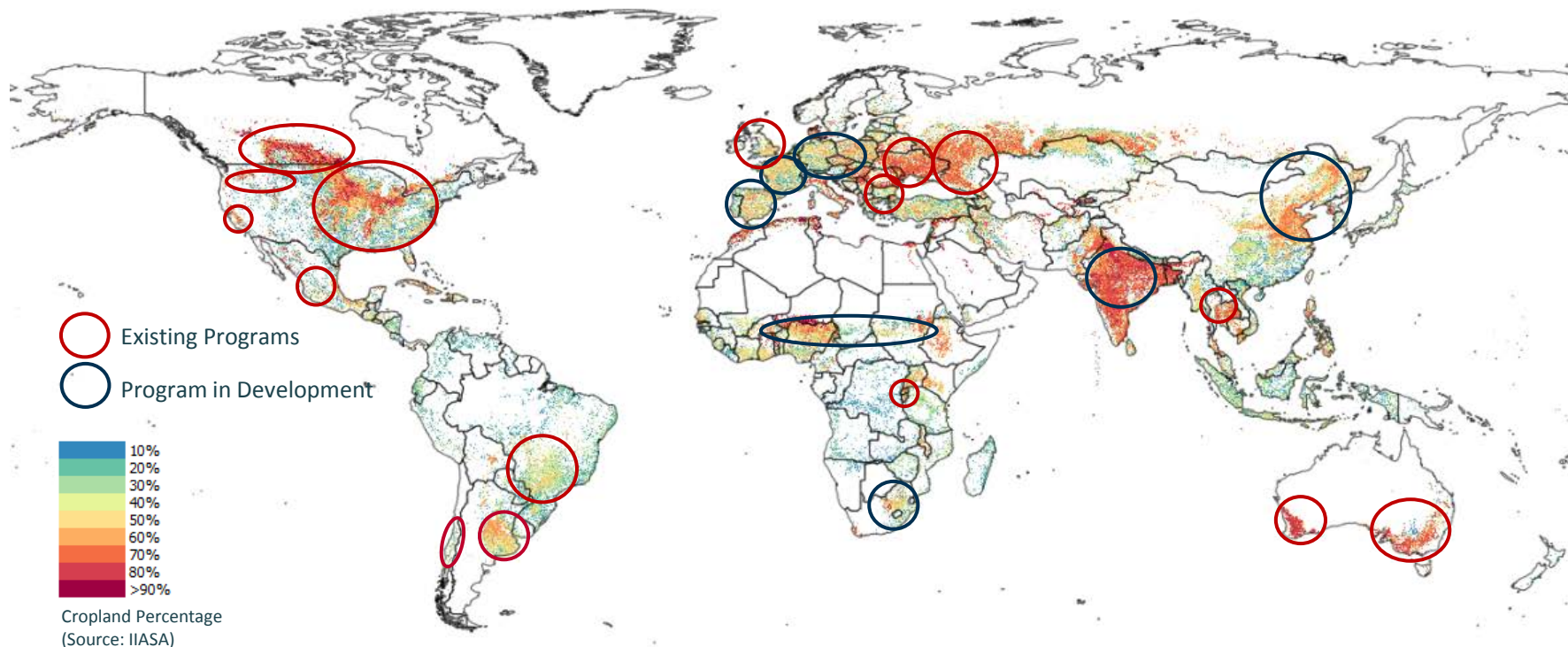
Variable rate application of pesticides

Damage assessment

Monitoring Programs Worldwide

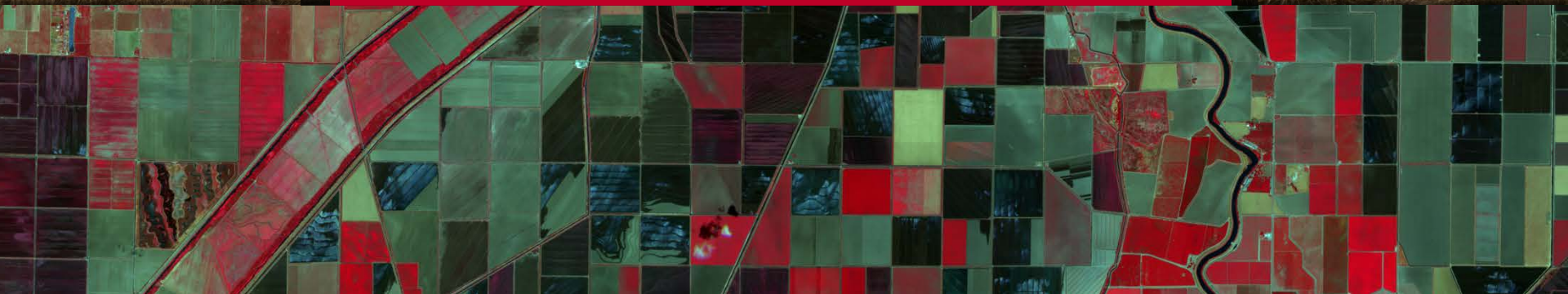


BlackBridge
a Planet Labs Company





Quick and Easy Data Management



Easy Imagery Access



Imagery is cloud hosted and accessible via:

1. Dedicated web app for users
 2. REST API for programmatic access
- Search all imagery from *YOUR* subscription
 - Access all from *YOUR* Subscription

Easy Imagery Access



BlackBridge
a Planet Labs Company

REST API

Programmatic
query and retrieval
of imagery

Full metadata
search

To download a zipped image product directly:

```
>>> import requests
>>> import cgi
>>> s = requests.Session()
>>> r =
s.get('https://geocloud.blackbridge.com/gcapi/getProduct?imgtype=re_3a&catid=1
streaming=True')
>>> if r.status_code == 200:
...     if r.headers.get('content-type') == 'application/zip':
...         _params = cgi.parse_header(r.headers.get('content-disposition'))
...         filename = params.get('filename')
...         with open(filename, 'wb') as f:
...             f.write(r.content)
...     else:
...         print r.text
... else:
...     print r.text
```

Query:

<https://eyefind-ag.blackbridge.com/rest/v1?>

[toiStart=2012-07-01&](#)
[toiEnd=2012-08-01&](#)
[aoiType=pol&](#)
[country=United States&](#)
[admin=South Dakota&](#)
[cc=5&](#)
[imgType=itt](#)

Ideal for custom workflows and
automated processes.

Cloud-Based Co-location



BlackBridge
a Planet Labs Company

Deploy your workflows on VMs next to the data:

- Instant data – no download latency
- Access to scalable compute resources
- **More than 3 times faster archive queries**
- **More than 20 times faster image downloads**



RapidEye Data Distribution



BlackBridge
a Planet Labs Company



VS



Main Benefits



BlackBridge
a Planet Labs Company

Large-area collection



Multiple in-season coverage



Field-level detail



Quick and easy access



Cost-effectiveness





Danke !

karsten.frotscher@blackbridge.com

